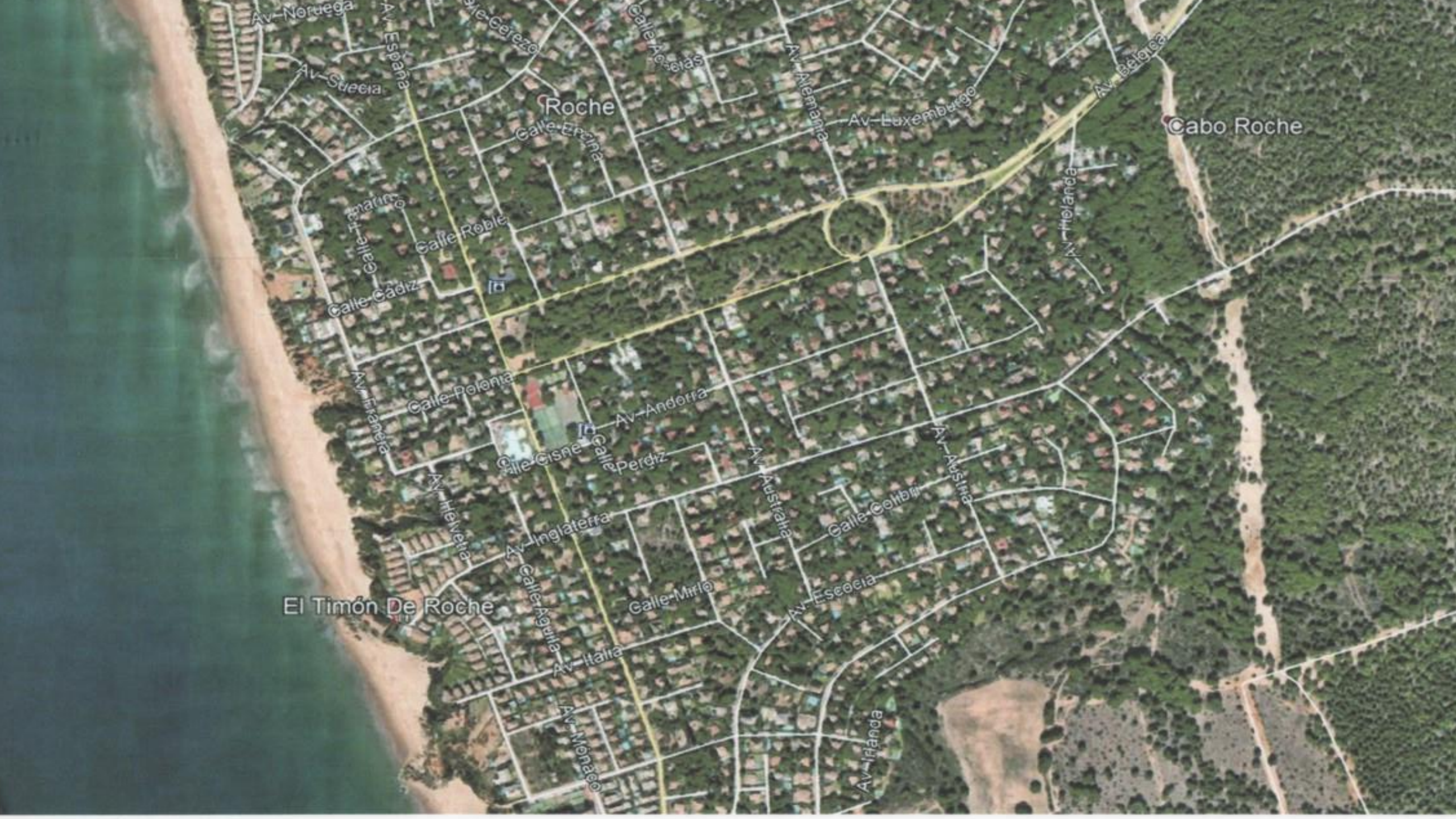




Roche

Villas overlooking the beach or
quietly situated along streets
bordered by pine trees



Av. Noruega

Av. España

Calle Cerezo

Calle Acahuas

Av. Alemania

Av. Luxemburgo

Av. Bélgica

Roche

Calle Erceña

Cabo Roche

Av. Suecia

Calle Fátima

Calle Roble

Calle Cádiz

Av. Inglaterra

Calle Polonia

Av. Andorra

Calle Cisne

Calle Perdiz

Av. Australia

Av. Austria

Calle Colibri

Av. Irlanda

Av. Inglaterra

Calle Mirlo

Av. Eslovenia


El Timón De Roche

Av. Argentina


Av. Italia

Av. Irlanda


Av. Irlanda

A photograph taken from a balcony or terrace, looking out over a vast ocean towards a beach. The scene is framed by white architectural columns and a curved overhang. The sun is low on the horizon, creating a bright, hazy glow across the sky and reflecting on the water. The ocean is dark blue with white-capped waves breaking. In the foreground, the balcony floor is paved with light-colored tiles, and a small potted plant is visible on the left. A semi-transparent white circle is overlaid on the right side of the image, containing text.

Villas overlooking
the fabulous
Roche beach

A photograph of a quiet residential street lined with large, mature pine trees. The trees have thick, gnarled trunks and dense, green, umbrella-shaped canopies. A white decorative fence runs along the left side of the road. A street lamp is visible on the right. In the distance, a few cars are parked on the street. A semi-transparent circular overlay is positioned on the right side of the image, containing the text "Villas on quiet streets lined with pine trees" in a black serif font, with a horizontal line underneath the text.

Villas on quiet
streets lined with
pine trees



Villas on quiet streets
leading to the beach




One of several
sandy coves




Riders on Roche
beach at sunset



The view from the
restaurant
“El Timon” terrace



Roche beach
looking towards
“El Timon”

A scenic landscape featuring a wide, reddish-brown dirt path that leads from the foreground towards a sandy beach in the distance. The path is flanked on both sides by steep, green hills covered in dense vegetation. The ocean is visible in the background under a clear blue sky. On the far left, a portion of a red and white circular road sign is visible. A large, semi-transparent white circle is overlaid on the right side of the image, containing text.

The path to Roche
beach and the
“Casa Luis”
chiringuito



Roche beach from
the “El Timon”
restaurant with
views across the
bay and to Sancti
Petri island




Another sandy
cove



One of the
smaller sandy
coves

Ana's May



Roche beach
looking towards
La Barossa



The boardwalk
above the coves
at Roche




Sunset over the
coves at Roche



The view from Roche
lighthouse overlooking
the fishing port and
marina with views to
Fontanilla beach and
Conil



The children's playground

A photograph of an outdoor sports facility. In the foreground, there is a red basketball court with white lines. To the left, a green tennis court is partially visible. In the background, there are several tall, mature trees with dense green foliage. A basketball hoop with a white backboard and orange rim stands in the middle ground. A black chain-link fence surrounds the courts. Tall light poles with multiple lamps are visible in the background under a clear blue sky.

Numerous ball
courts: volley,
tennis and padel



“Entre Ramas”
A teenagers’
paradise beside the
entrance to Roche



A senior member of
the security team
always on the alert
except at siesta
time



Supermercado
COVIRAN
Estamos ahí
La Frutería

On the road to
Roche from El
Colorado
Manolo's family
supermarket